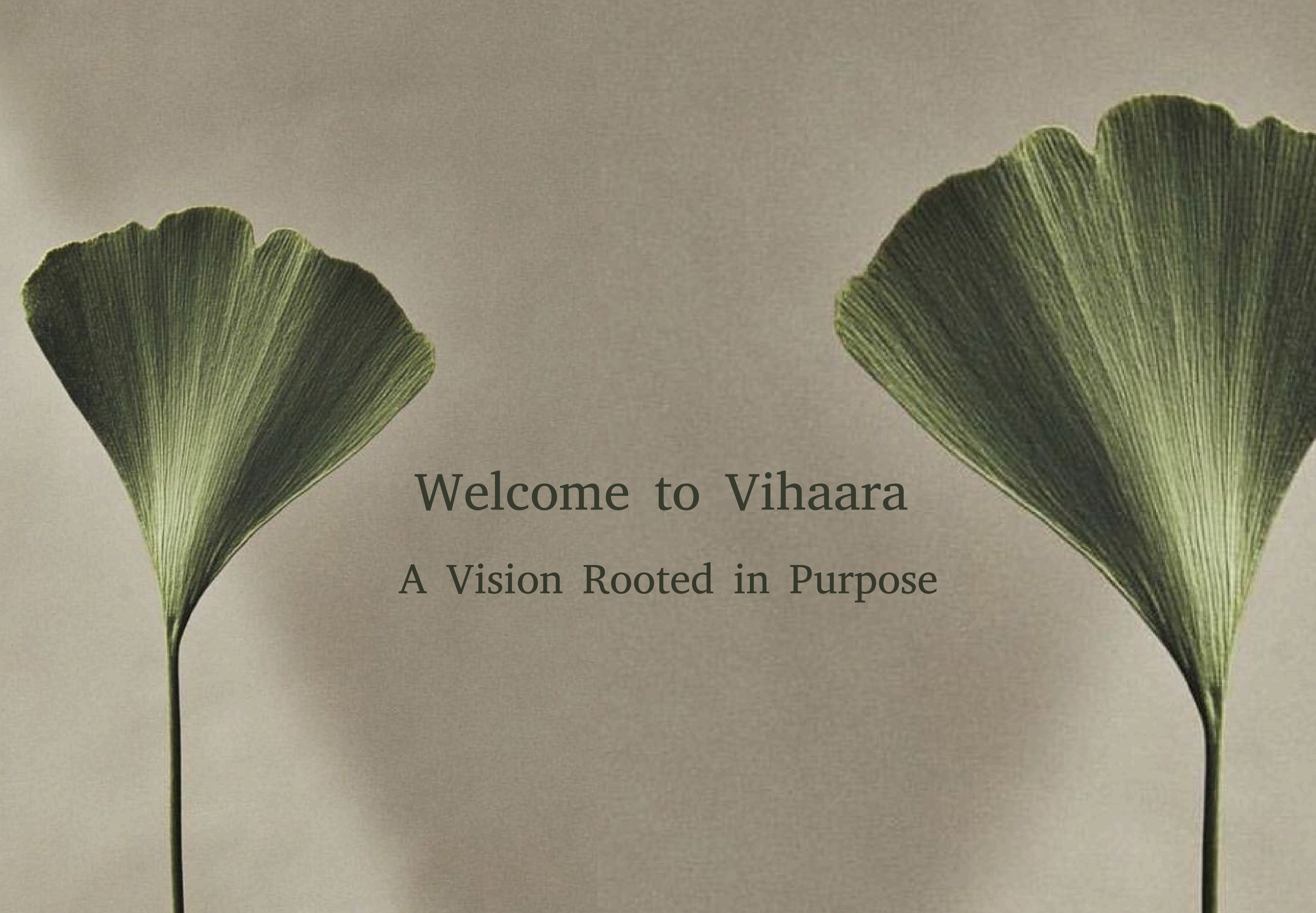




v i h a a r a



MS HOMES DEVELOPERS

Two Ginkgo biloba leaves are positioned on the left and right sides of the image, framing the central text. The leaves are dark green with prominent, parallel veins radiating from the base. They have a fan-like shape with slightly wavy, scalloped edges. The stems are thin and dark, extending downwards from the base of each leaf.

Welcome to Vihaara

A Vision Rooted in Purpose

A VISION FOR THE FUTURE

Vihaara is more than just a residential development — it's a passion project by Mohsin Sheikhan, a visionary who has dedicated over 40 years to shaping Pakistan's construction landscape.

With decades of experience and a deep understanding of the nation's housing challenges, his mission has always been to make affordable, dignified living a reality for families across Pakistan.

Vihaara is the embodiment of that vision — a thoughtfully designed, secure, and accessible community created to bridge the growing housing gap and offer a place that truly feels like home.

A scenic landscape photograph featuring a dense forest of dark evergreen trees in the foreground. In the background, rolling mountain ranges are visible, partially shrouded in a soft, white mist or fog. The sky is a pale, hazy blue. The overall mood is serene and atmospheric.

OVERCOMING BARRIERS TO AFFORDABILITY



vihaar



vihaar

LOCATIONS

GANDHARA CITY | MUMTAZ CITY

6 min ISLAMABAD
INTERNATIONAL AIRPORT

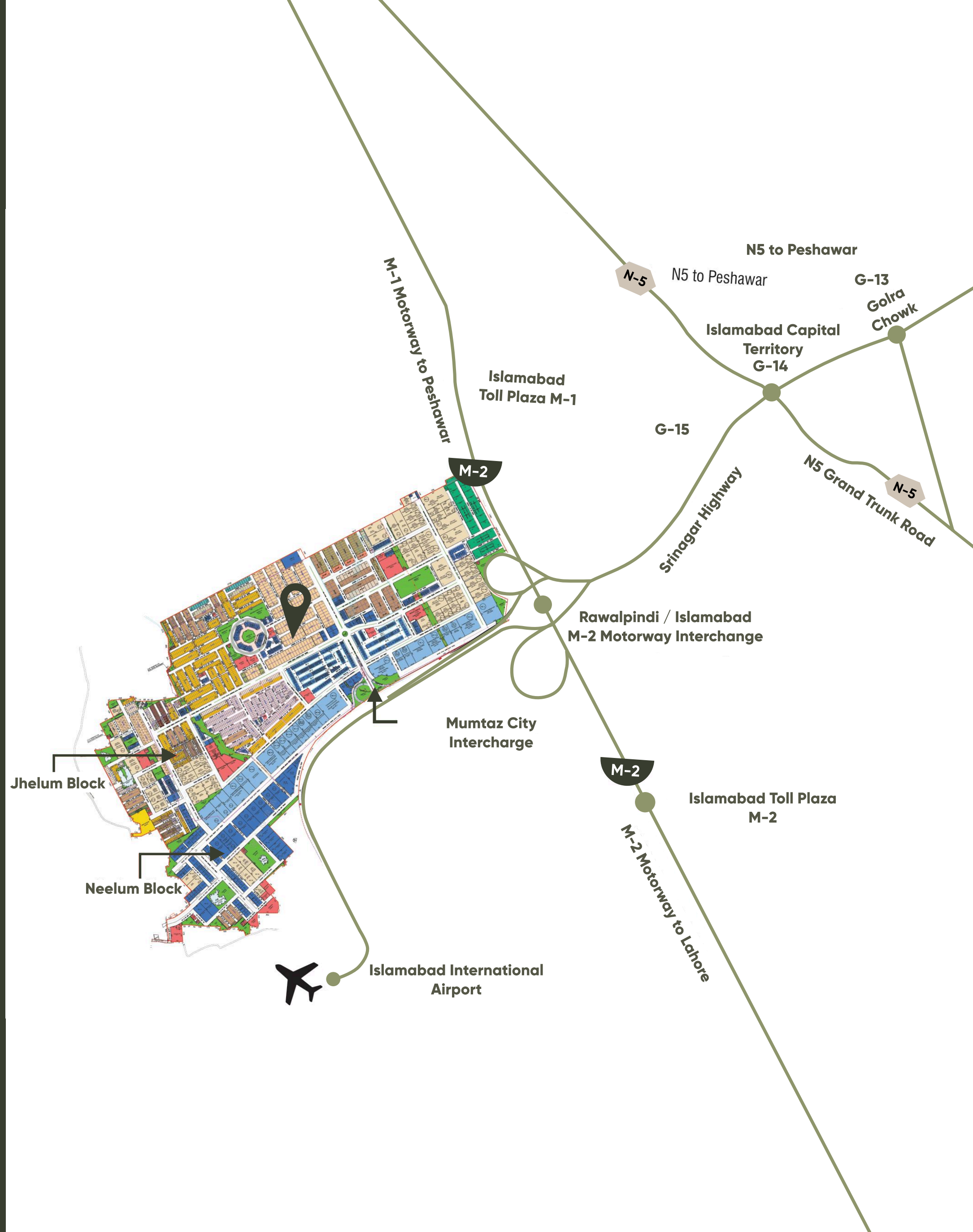
25 min FAISAL MASJID MOSQUE

20 min BLUE AREA

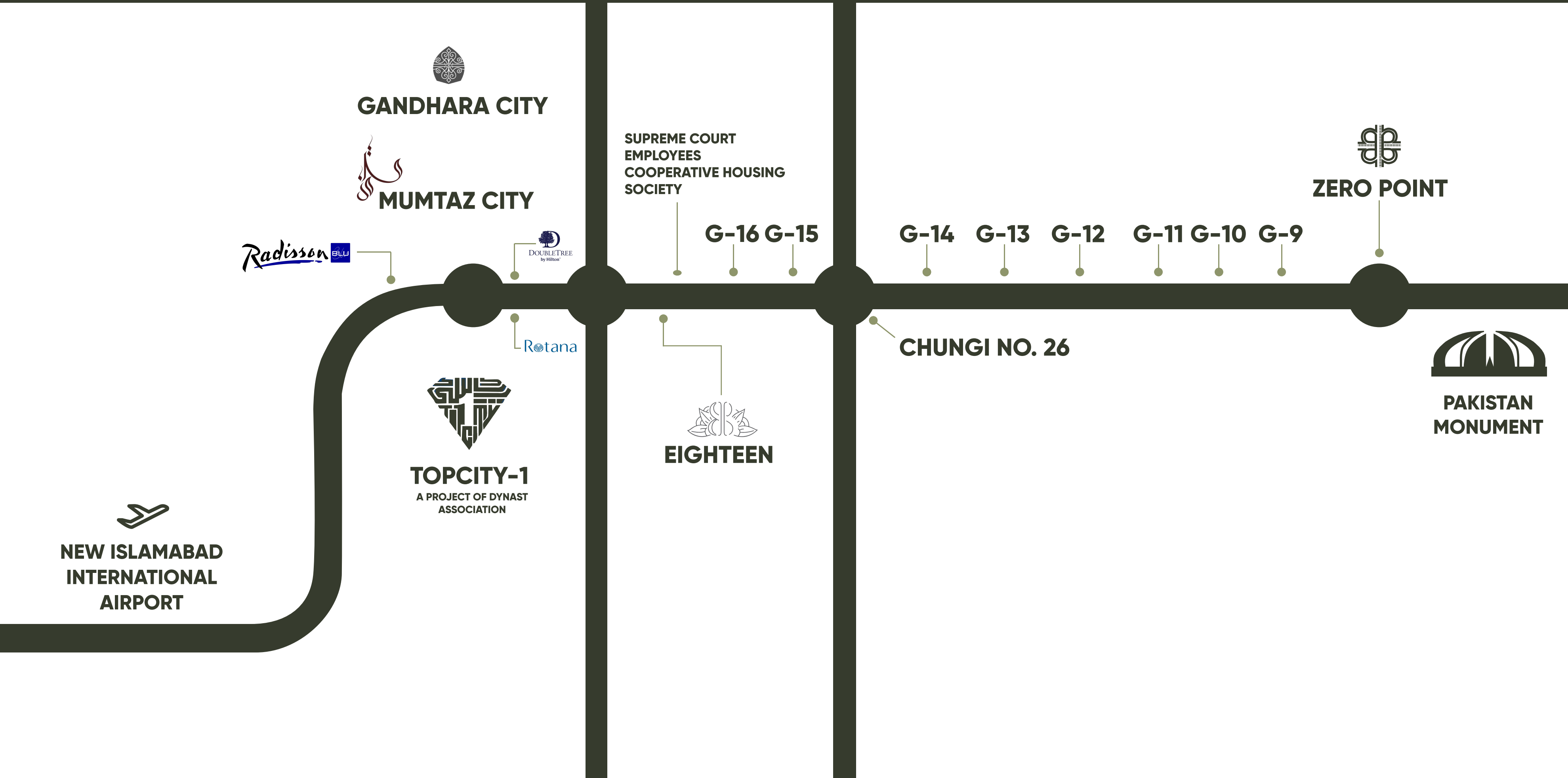
25 min F-7 MARKAZ

20 min F-10 MARKAZ

16 min ZERO POINT



STRATEGICALLY LOCATED FOR CONVENIENCE & CONNECTIVITY



vihara

A Community Designed for Comfort
and Sustainability



SECURE GATED COMMUNITY



GREEN SPACES & PLAYGROUNDS



PROXIMITY TO SCHOOLS,
MARKETS & TRANSPORT



ENERGY-EFFICIENT UTILITIES



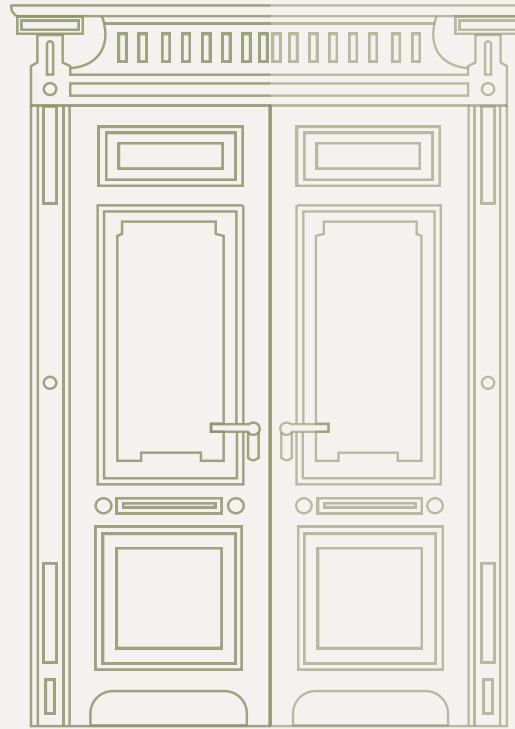
SUSTAINABLE INFRASTRUCTURE



DEDICATED COMMUNITY
AREAS (E.G., MOSQUE, PARKS)





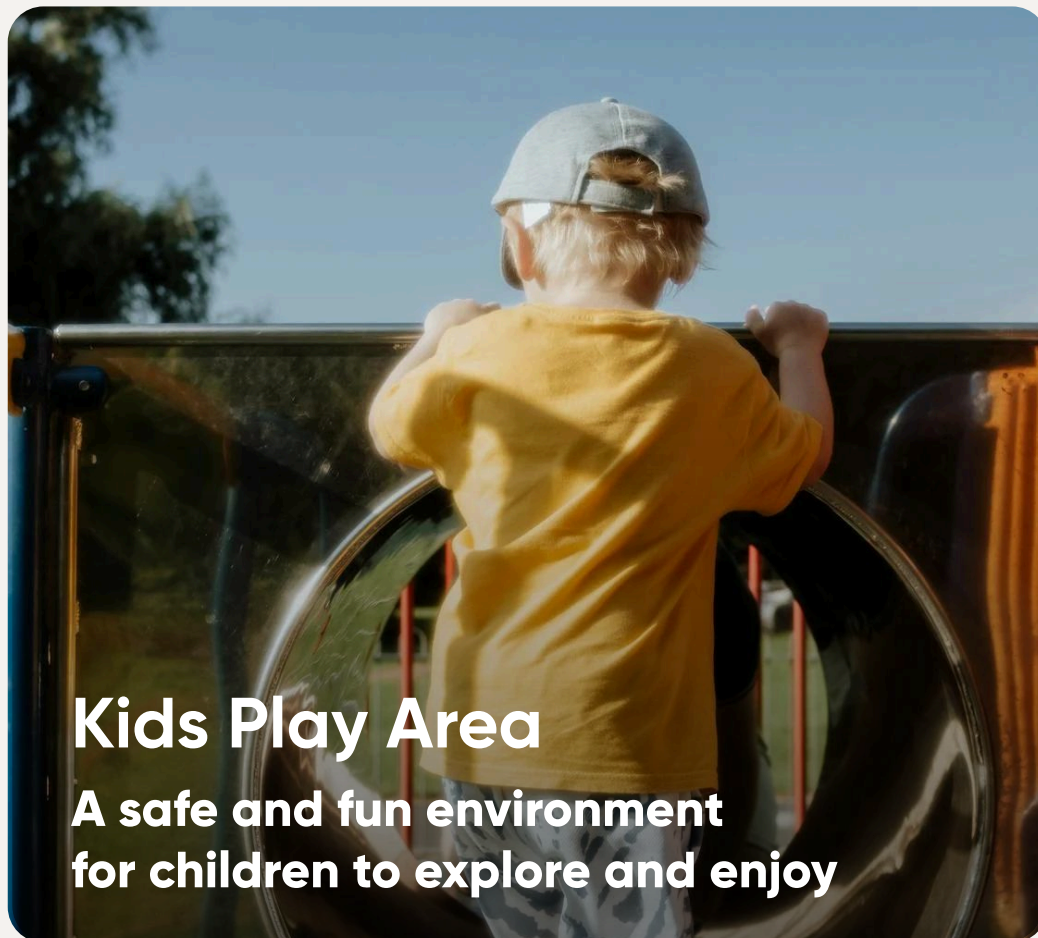


ENHANCING LIVES WITH THOUGHTFUL AMENITIES

Vihaara offers a range of thoughtfully designed amenities aimed at enhancing the quality of life for its residents. The project features a dedicated kids' play area for safe recreation, a modern computer lab to support education, and skill development facilities that encourage learning and personal growth. An on-site industrial unit provides job opportunities within the community, helping to foster economic empowerment. To promote sustainability and reduce long-term living costs, the development also incorporates rooftop solar panels—supporting both environmental responsibility and energy efficiency.

INNOVATIVE AMENITIES FOR COMFORT

At Vihaara, amenities are designed to support a vibrant lifestyle—offering spaces to work, learn, and relax for every member of the community.



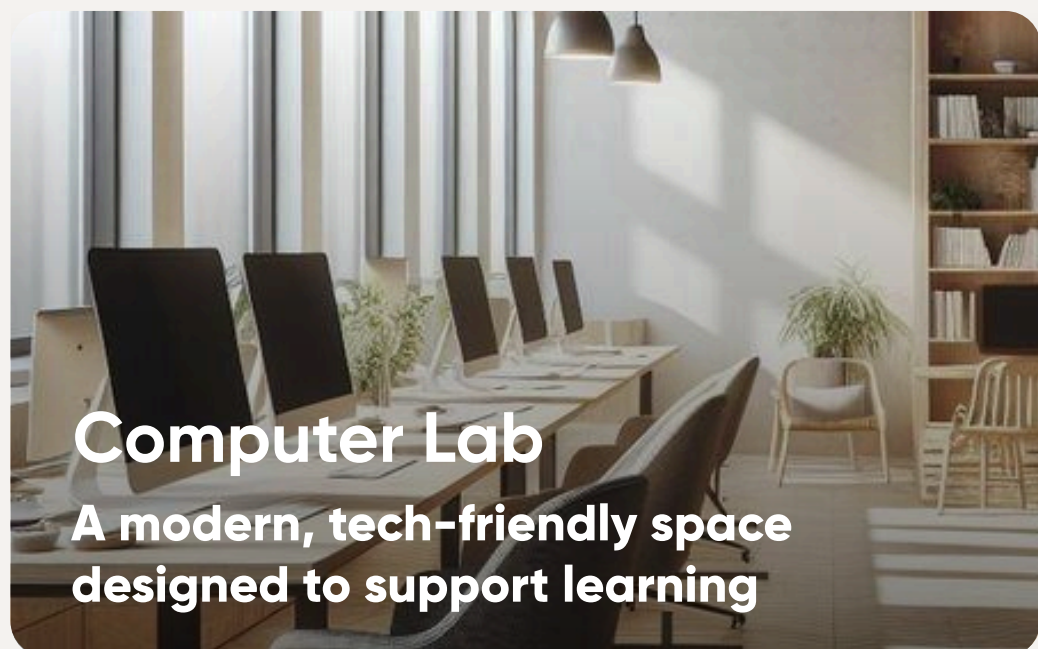
Kids Play Area

A safe and fun environment for children to explore and enjoy



Training Centre

Offers a dynamic space for businesses to thrive



Computer Lab

A modern, tech-friendly space designed to support learning



Solar-Powered Roof

Sustainable feature for eco-friendly living



Women's Training Center

Space designed to empower and inspire

vihaara



WHERE COMFORT MEETS A NEW ERA OF URBAN LIVING

Vihaara redefines urban living with thoughtfully apartments, offering a perfect blend of comfort and new standard of living.

Studio & 1-2 Bedrooms

5+ Thoughtfully Designed Amenities

G Parking + 6 Floors

G Parking + 8 Floors

PAYMENT PLAN OPTIONS

1 Confirm allotment on full cash payment

2 36 Month Payment Plan – Through Balloting

3 50% Bank Finance – 50% Cash Through Balloting



Vihara

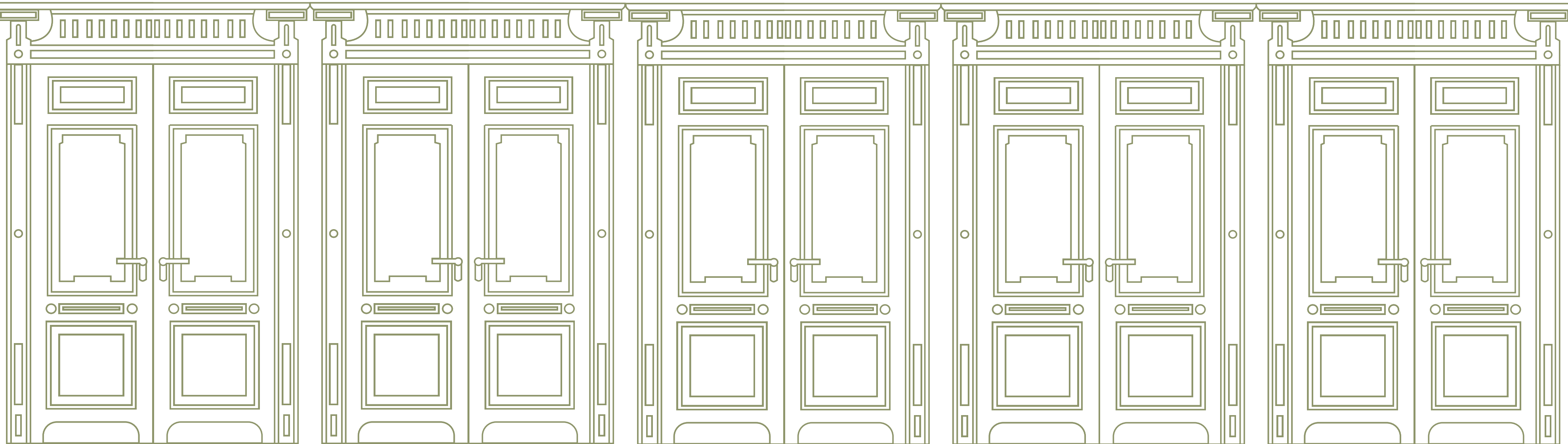


vihaara

v i h a a r a



APARTMENTS



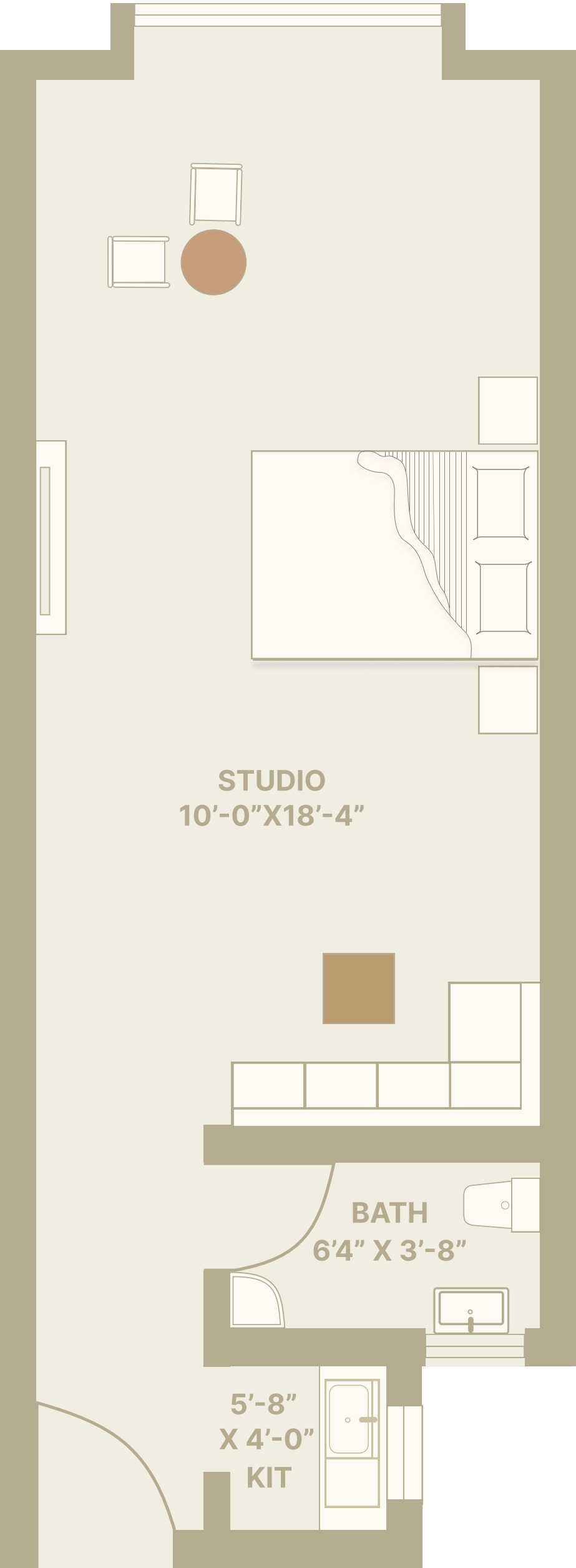
STUDIO

(364 SQ. FT.)

The studio apartment offers an open living space and a modern kitchen. The stylish bathroom and cozy layout create a perfect blend of comfort and functionality.

PAYMENT SCHEDULE

Booking	360,000 PKR
Confirmation (After 30 days from Booking)	360,000 PKR
Allocation (After 60 days from Booking)	360,000 PKR
36 Monthly Installment	(36,000 x 36) 1,296,000 PKR
5 Half Yearly Installment	(172,800 x 5) 864,000 PKR
Possession	360,000 PKR
Total	3,600,000 PKR



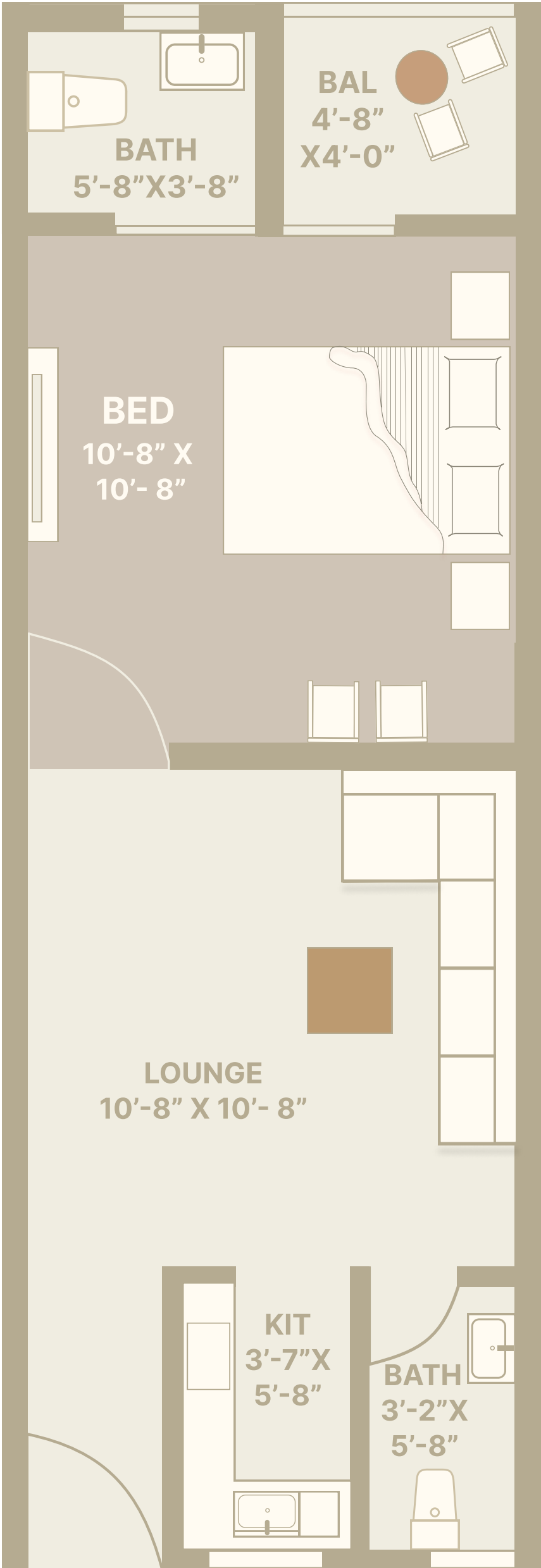
ONE BEDROOM

(443 SQ. FT.)

One-bedroom apartment offers a spacious living area, and a sleek modern kitchen. With a stylish bathroom and a cozy balcony, it combines comfort and elegance in the perfect space.

PAYMENT SCHEDULE

Booking	440,000 PKR
Confirmation (After 30 Days from Booking)	440,000 PKR
Allocation (After 60 from Booking)	440,000 PKR
36 Monthly Installment	(44,000 x 36) 1,584,000 PKR
5 Half Yearly Installment	(220,000 x 5) 1,100,000 PKR
Possession	396,000 PKR
Total	4,400,000 PKR



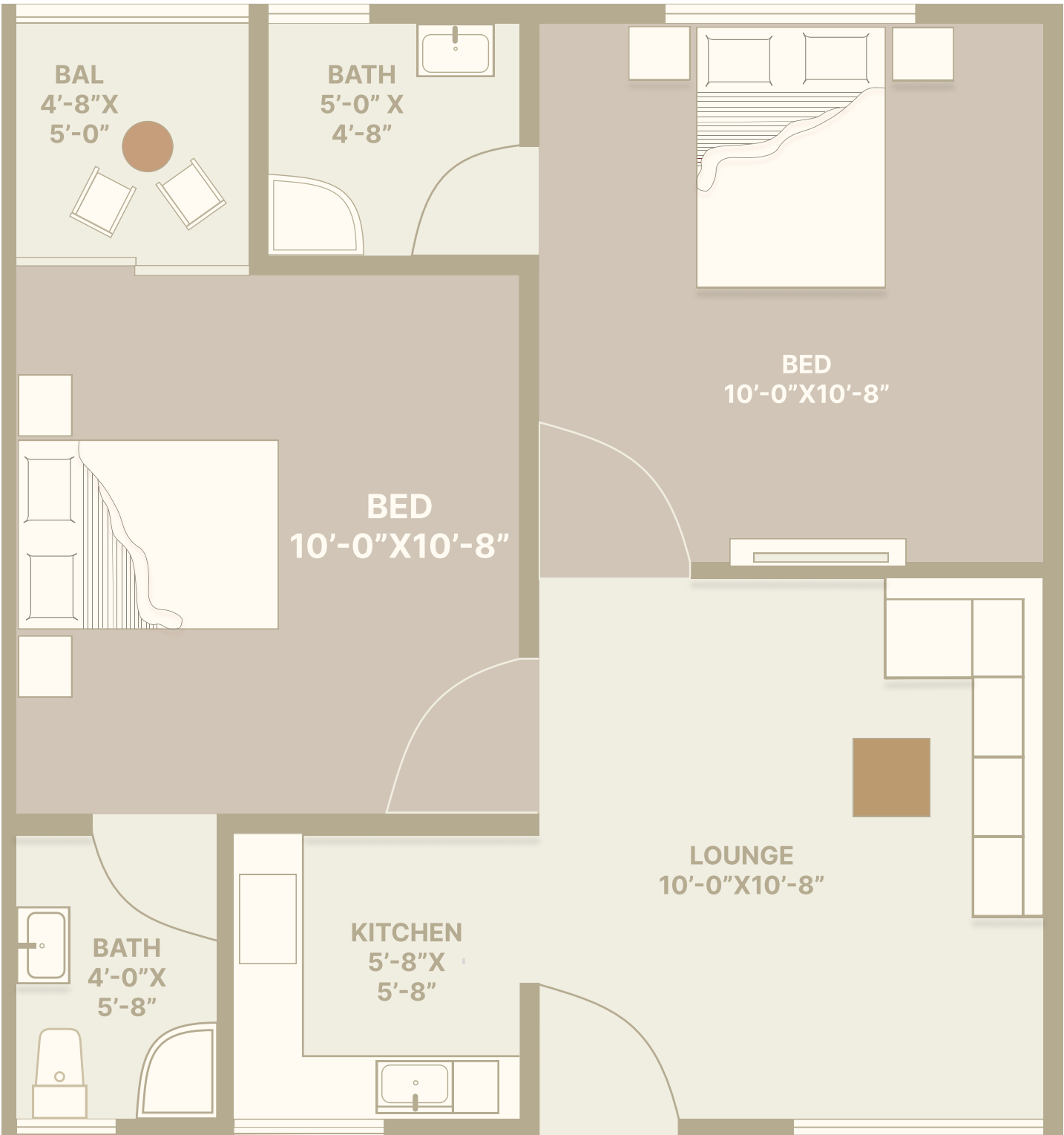
TWO BEDROOM

(560 SQ. FT.)

This well-designed two-bedroom apartment features a spacious lounge, a modern kitchen and a cozy balcony enhance comfort, offering a perfect blend of functionality and elegance.

PAYMENT SCHEDULE

Booking	560,000 PKR
Confirmation (After 30 Days from Booking)	560,000 PKR
Allocation (After 60 from Booking)	560,000 PKR
36 Monthly installment	(56,000 x 36) 2,016,000 PKR
5 Half Yearly Installment	(268,800 x 5) 1,344,000 PKR
Possession	560,000 PKR
Total	5,600,000 PKR



MODERN COMFORT, SMART
AMENITIES, AND A VIBRANT
LIFESTYLE AWAIT

REGISTRATION FORM

Name

Unit No

Size

Type

Total Cost

Booked By

Date

C.N.I.C.#

					—								—	
--	--	--	--	--	---	--	--	--	--	--	--	--	---	--

Signature

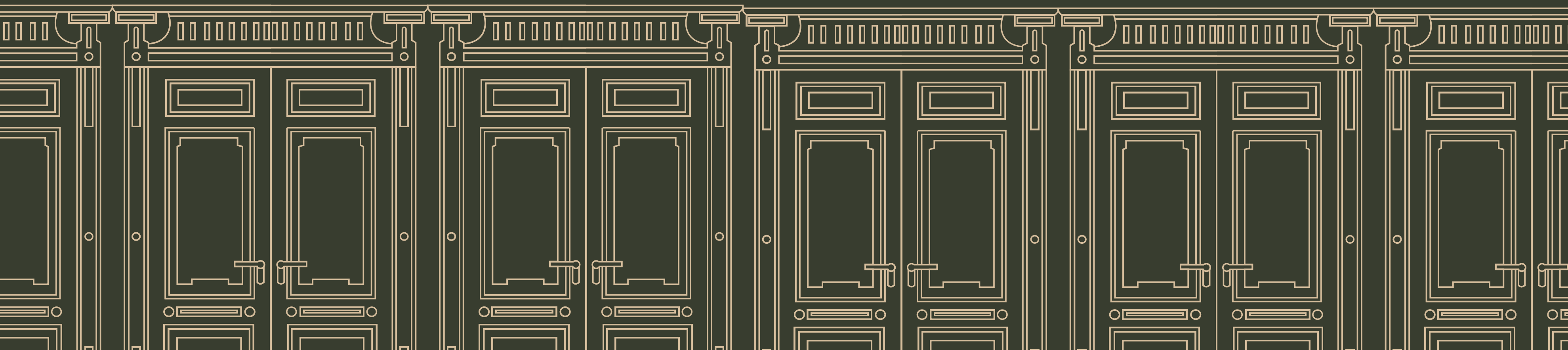
TERMS & CONDITIONS
All Installments Must Be Deposited
Before 10th Of Each Month.

EXTRA CHARGES
Corner 10%

A Vision Rooted in Purpose

by

MS HOMES DEVELOPERS



CONTACT INFORMATION

0333 7777716

Plot No: 26, Street: Quaid Road North, Block: Neelum Commercial-26,
Mumtaz City, Islamabad, Pakistan.



MS HOMES DEVELOPERS

UAE UK USA PAK